



# Citizen SPLOST Update December 9, 2016

gwinnettcounty  
GOVERNMENT



# Agenda

- Call to Order – Open Meeting
- Approval of Agenda\*
- Approval of Minutes\*
- County and City SPLOST Updates
- Audit Results
- Close Meeting\*
- Tour of the Lilburn City Hall/Library





**gwinnett**county  
GOVERNMENT

# County Update



# 6¢ Sales Tax in Gwinnett County

Fixed



State  
of  
Georgia

Optional



Gwinnett  
County

Require Voter  
Approval

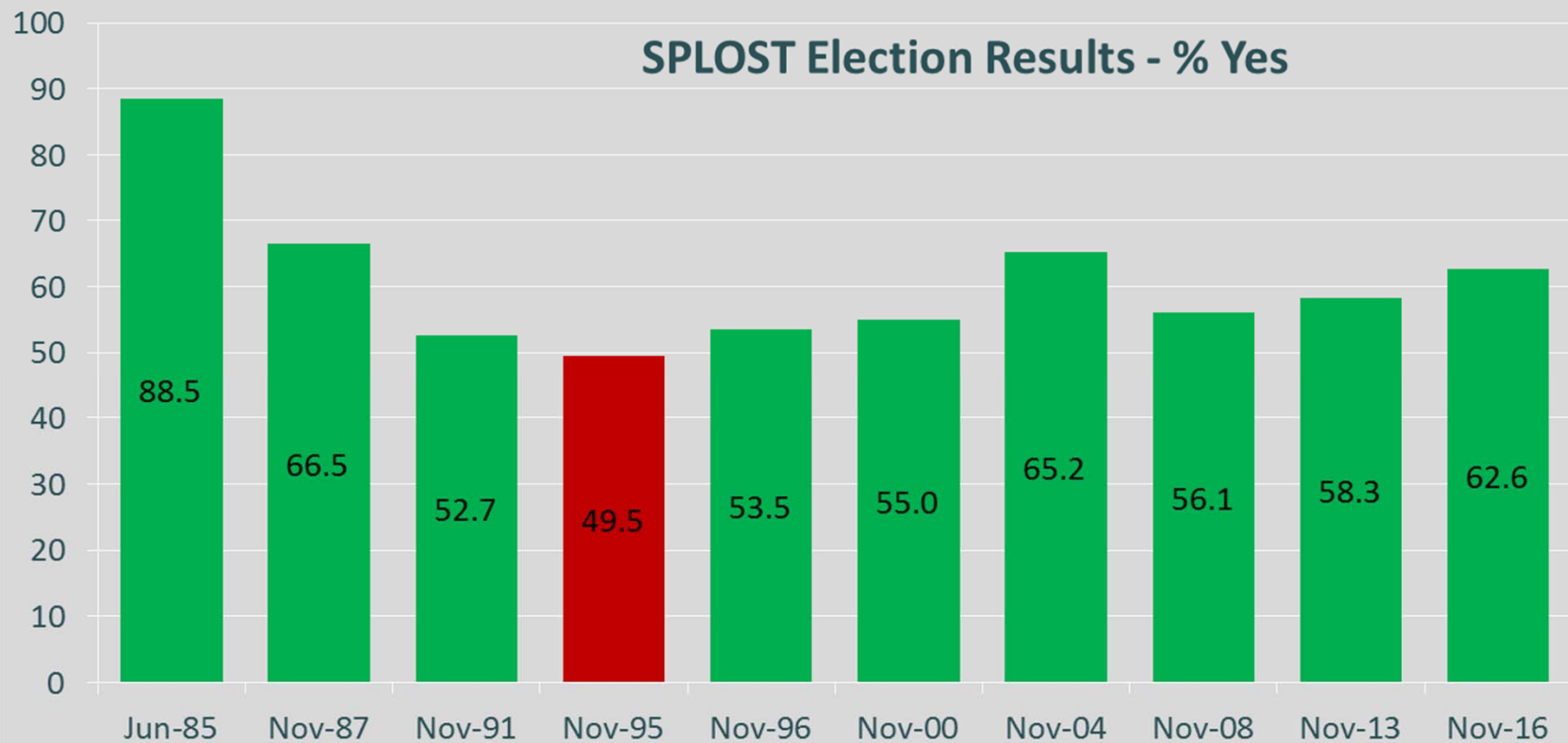
Optional



E-SPLOST



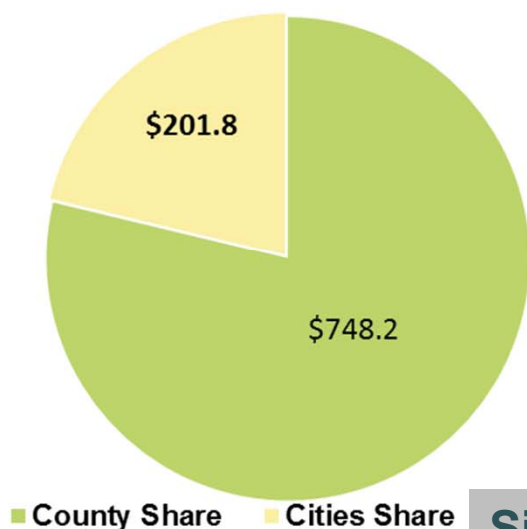
# SPLOST Election Results



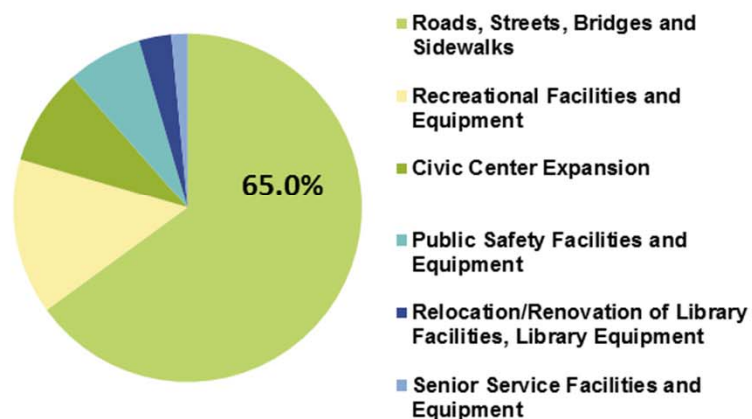


# 2017 SPLOST

2017 SPLOST Program



County Share of SPLOST Program



**Six-Year Program, 4/1/2017 – 3/31/2023**  
**Estimated Collections - \$950M**



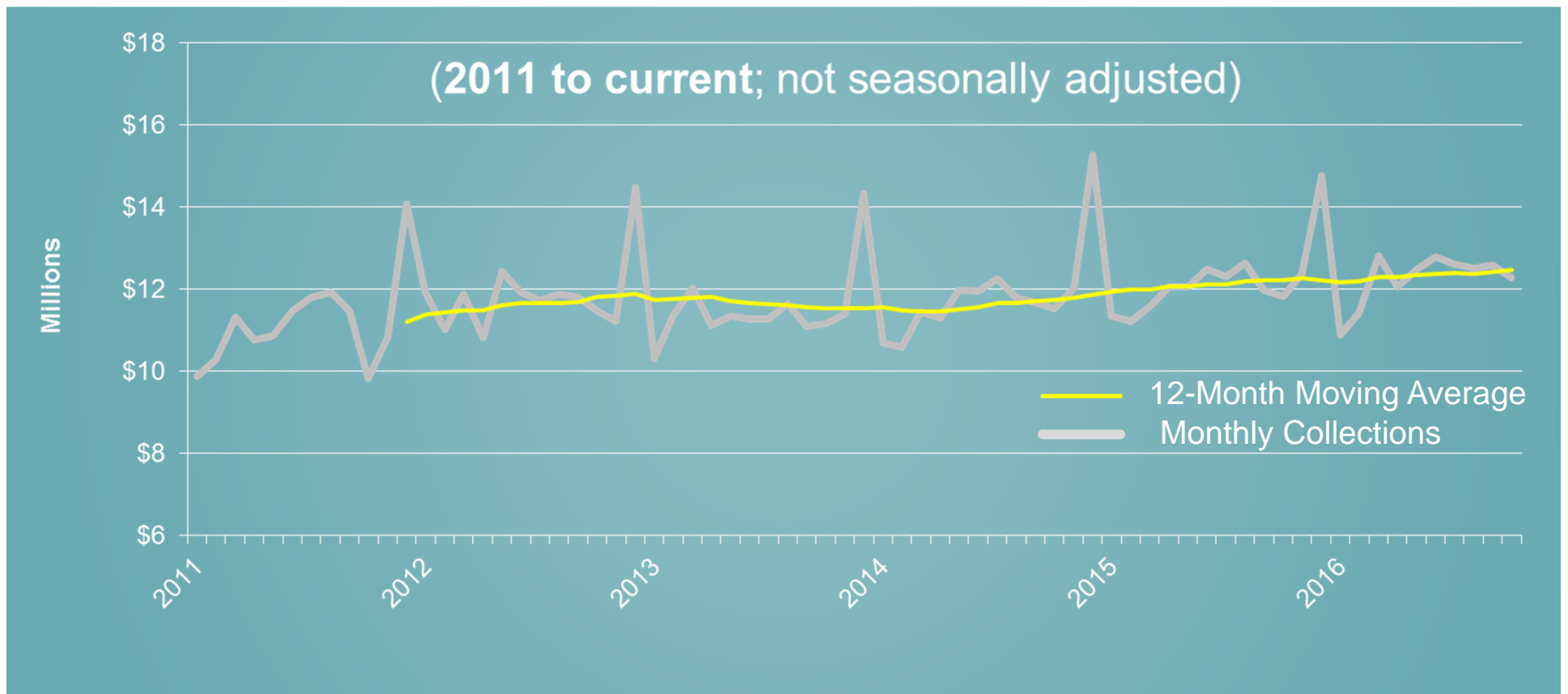
# All SPLOST Programs More than \$3.0 Billion in Revenues





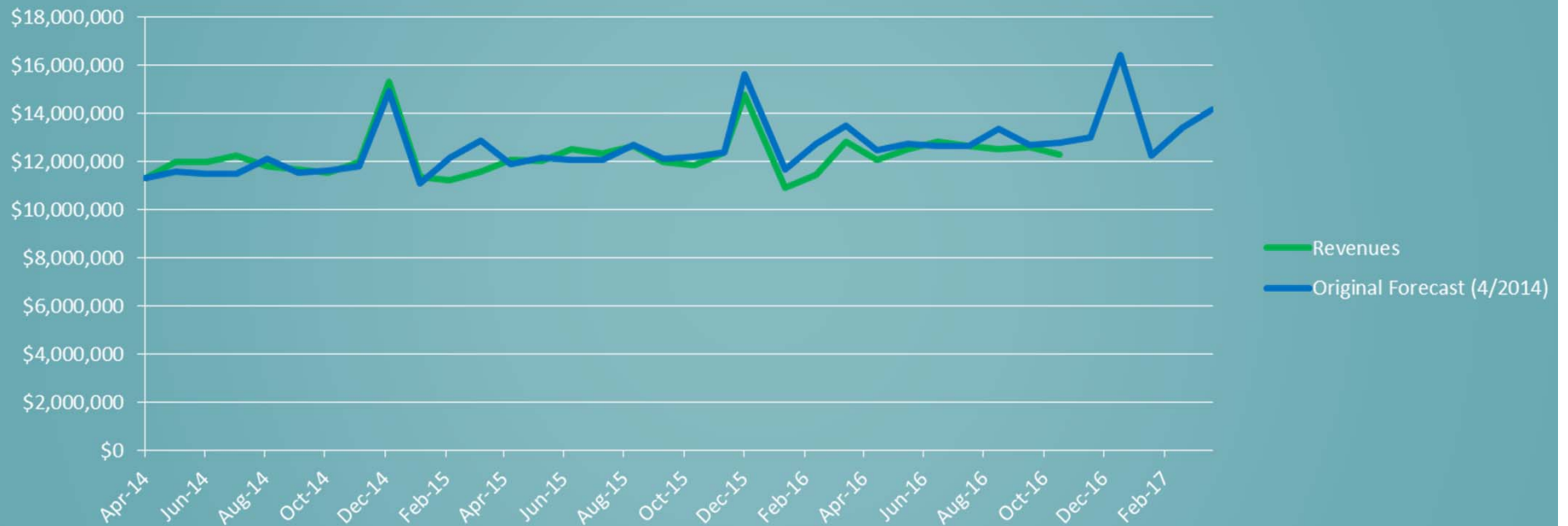


# Gwinnett SPLOST Collections





# 2014 SPLOST Program Revenues Actuals versus Forecast





# Gwinnett County SPLOST Programs

## 2005 Program (in millions)

Total Program Budget	\$ 573.6
Total Program Expenditures/Obligations (99.8%)	\$ 572.6

## 2009 Program (in millions)

Total Program Budget	\$ 630.6
Total Program Expenditures/Obligations (76.3%)	\$481.0

## 2014 Program (in millions)

Total Program Budget	\$ 339.8
Total Program Expenditures/Obligations (43.6%)	\$ 148.3



# J.B. Williams Park







# McDaniel Farm Park Phase II







# Best Friend Park Gym Renovations





# George Pierce Park Gymnasium





# South Gwinnett Park Renovations







# Multipurpose Fields



**Peachtree Ridge Park  
Multipurpose Field Conversion**

**E.E. Robinson Park  
Multipurpose Field**





# Fire Stations



**Fire Station 31**

**Fire Station 10**







# Medical Examiner's Office/Morgue



- **In Progress**
- 15,000 square feet
- Autopsy Stations
- Laboratory
- Storage



# Centerville Senior Center







# Roads, Streets, and Bridges

## State Route 20





# Roads, Streets, and Bridges

## State Route 20







# Roads, Streets, and Bridges

## State Route 20







# Roads, Streets, and Bridges

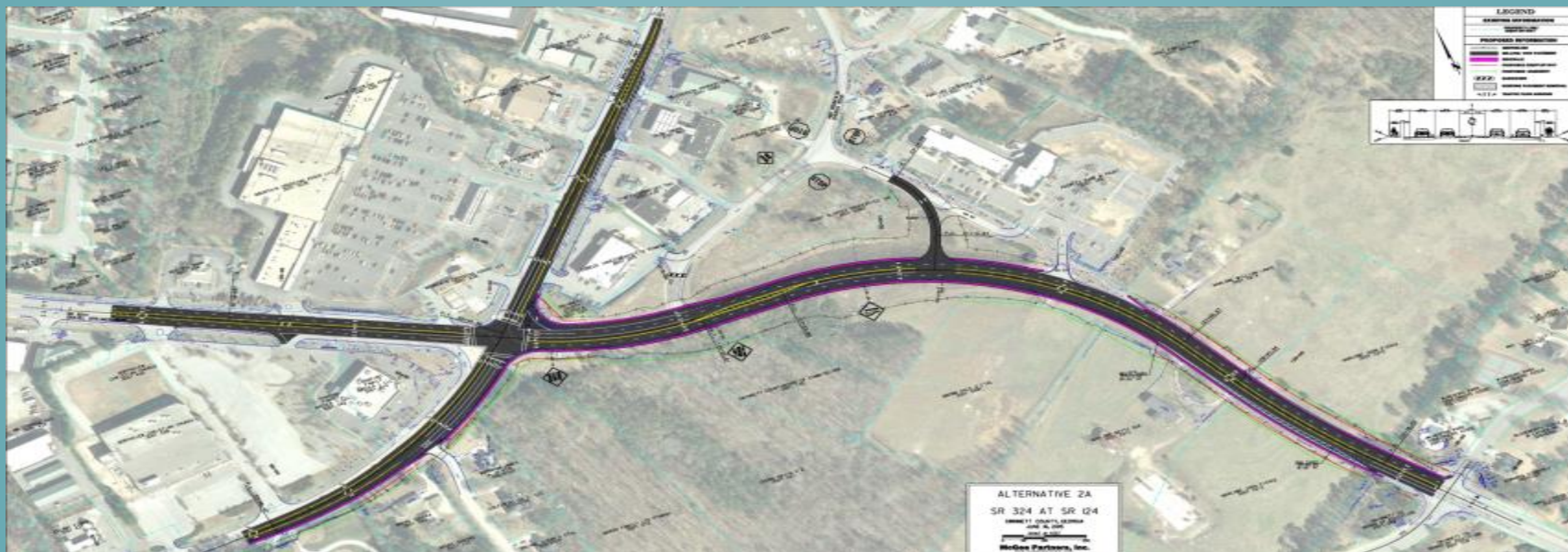
## State Route 324 / Gravel Springs Road (Jim Moore Road to Dacula Road)





# Roads, Streets, and Bridges

## State Route 324 / Gravel Springs Road at SR 124 / Braselton Highway







# Roads, Streets, and Bridges

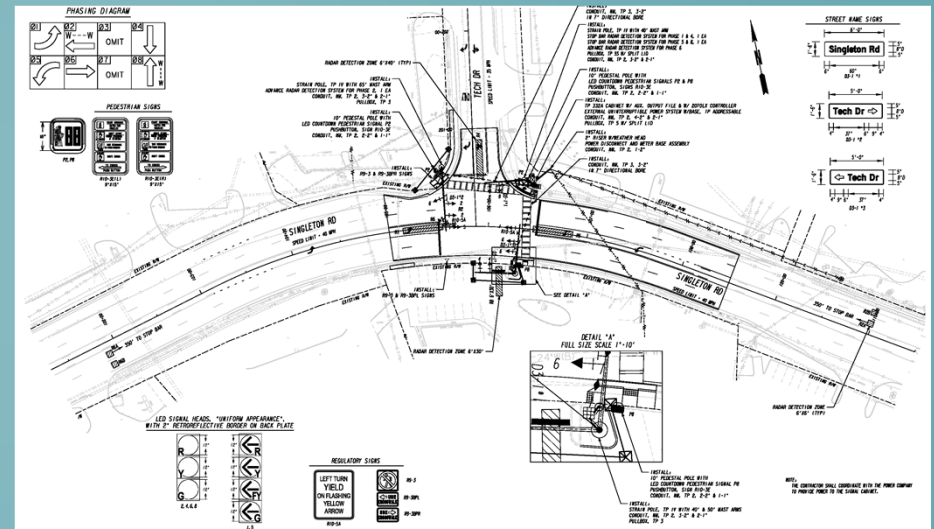
## State Route 84 / Grayson Parkway at Rosebud Road





# Roads, Streets, and Bridges

## Singleton Road at Tech Drive







# Roads, Streets, and Bridges

## Old Fountain Road Bridge





# Roads, Streets, and Bridges

## Garner Road Bridge

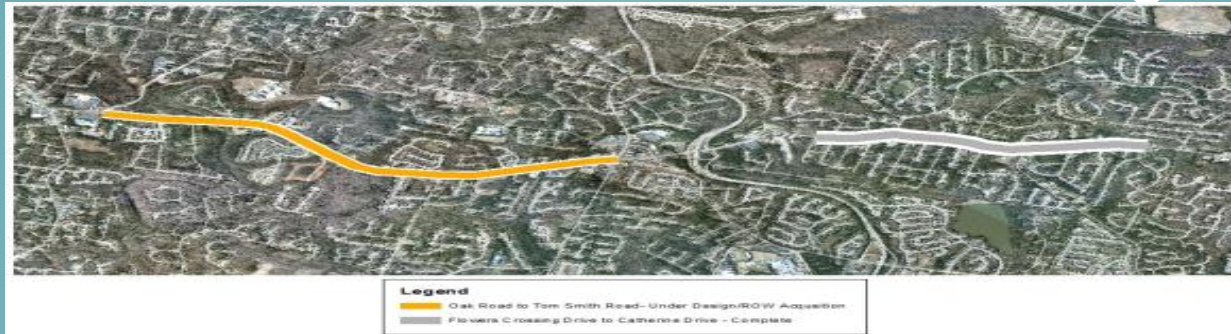






# Roads, Streets, and Bridges

## Five Forks Trickum Road widening





# Roads, Streets, and Bridges

## Current Construction

- Burns Road, Dickens Road and Beaver Ruin Road – pedestrian
- Peachtree Industrial Boulevard from south of McGinnis Ferry Road to north of Moore Road – major road
- Pleasant Hill Road at Club Drive – intersection
- SR 264 / Bethany Church Road from US 78 to Overland Trail – pedestrian
- Suwanee Dam Road at West Price Road – school safety



# Roads, Streets, and Bridges

## Recently Open to Traffic

- Collins Hill Road near GGC - pedestrian
- Dacula Road at Broad Street – intersection
- Five Forks Trickum Road at Chesapeake Drive – intersection
- Plunketts Road near EHC – pedestrian
- SR 124 / Braselton Highway at Hog Mountain Road – intersection
- SR 124 / Braselton Highway at Mt. Moriah Road – intersection





# Roads, Streets, and Bridges

## Upcoming Construction

- Doc Hughes Road at Spout Springs Road – intersection
- Hewatt Road (US 78 to Cherie Glen Road) – pedestrian
- Skyland Drive from Street Deville to Eldorado Place – pedestrian
- South Bogan Road at Kilgore Road – intersection



# 2017 SPLOST

## Citizens Project Selection Committee

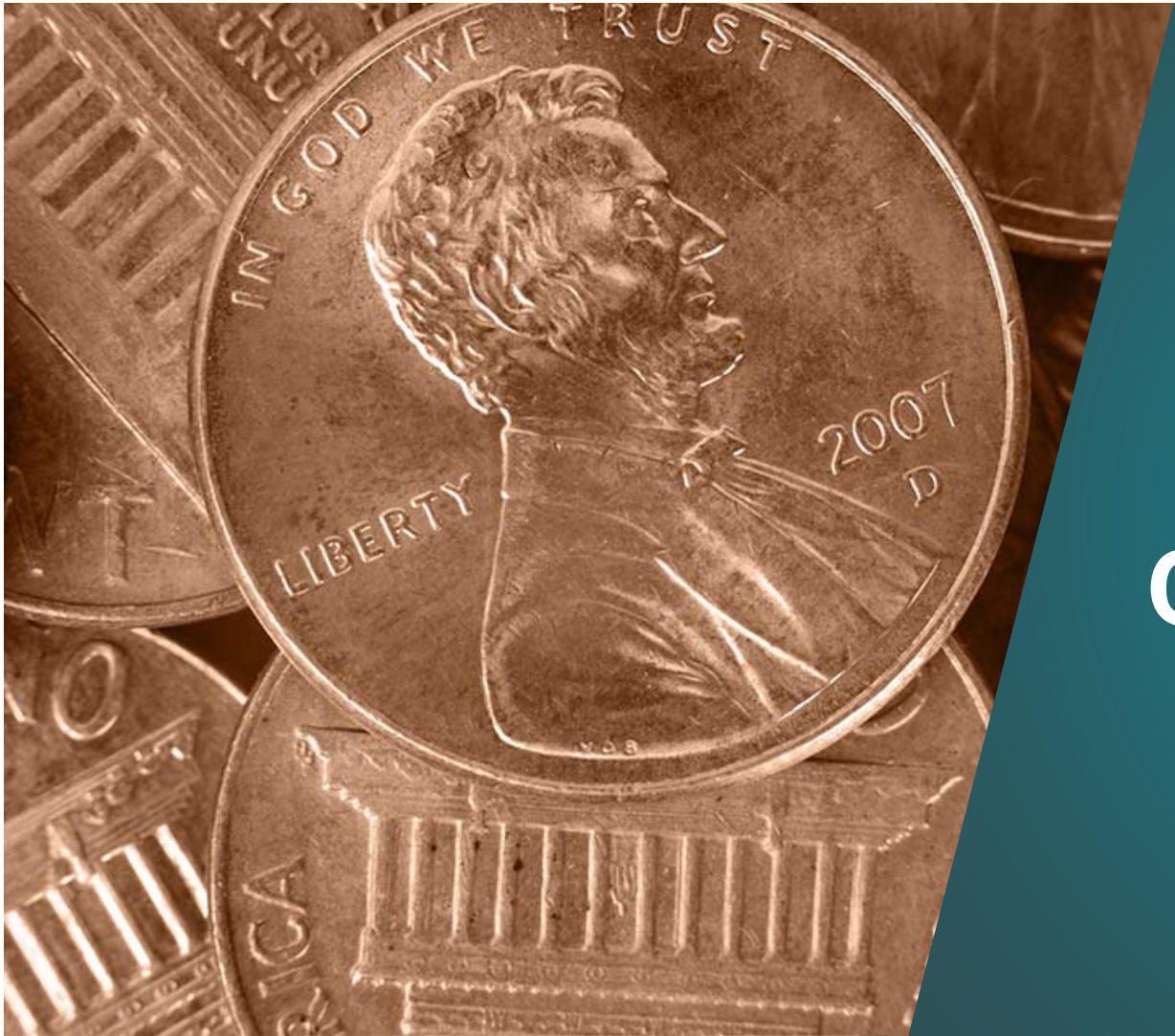
- **One** member and alternate from each of the following interest groups:
  - Commission District 1 residents
  - Commission District 2 residents
  - Commission District 3 residents
  - Commission District 4 residents
  - Business leaders
  - Civic Organizations leaders
  - Environmental stakeholders
  - Freight/Manufacturing representatives
  - Schools representatives
  - Senior representatives
  - Young Professional representatives

# 2017 SPLOST Project Categories

Category	Tier I	Tier II
Bridges, Culverts and Transportation Drainage	\$46 million	\$5.3173 million
Capital Projects Rehabilitation and Resurfacing	\$114 million	--
Intersections	\$45 million	\$11.9 million
Major Roads	\$118 million	\$16.3 million
Residential Speed Control	\$750,000	--
Road Safety and Alignment	\$30 million	\$5 million
School Safety	\$20 million	\$2.5 million
Sidewalks and Pedestrian Safety	\$30.463 million	\$7.6172 million
Transportation Planning	\$1.65 million	--
Unpaved Roads	\$1 million	--
<b>TOTALS</b>	<b>\$406.863 million</b>	<b>\$48.6345 million</b>

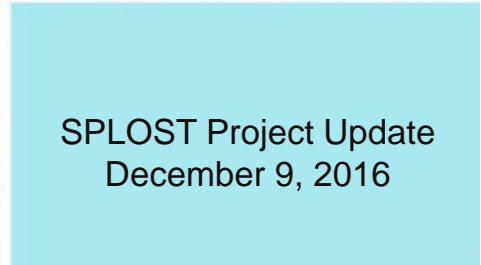






**gwinnett**county  
GOVERNMENT

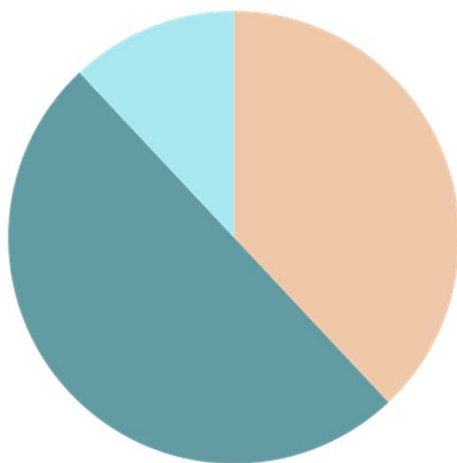
# City Updates





# Lilburn

## 2005 SPLOST Program Budget



- Recreational Facilities
- Roads, Streets, and Bridges
- Public Safety Facilities and Equipment

<b>Total Program Budget</b>	<b>\$9,888,398</b>
Recreational Facilities	\$3,543,184
Roads, Streets, and Bridges	\$4,735,445
Public Safety Facilities and Equipment	<u>\$1,191,159</u>
<b>Total Program Expenditures (June 30<sup>th</sup>, 2016)</b>	<b>\$9,469,788</b>

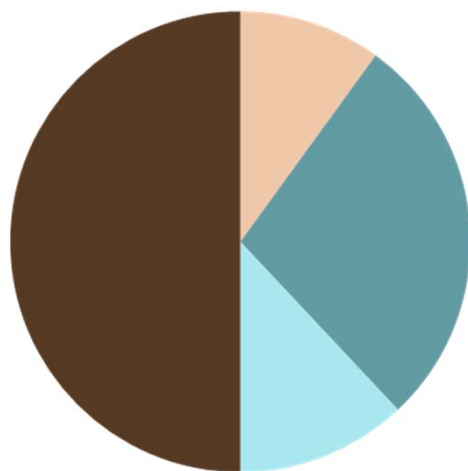
Nikki Perry





# Lilburn

## 2009 SPLOST Program Budget



- Recreational Facilities
- Roads, Streets, and Bridges
- Public Safety Facilities and Equipment

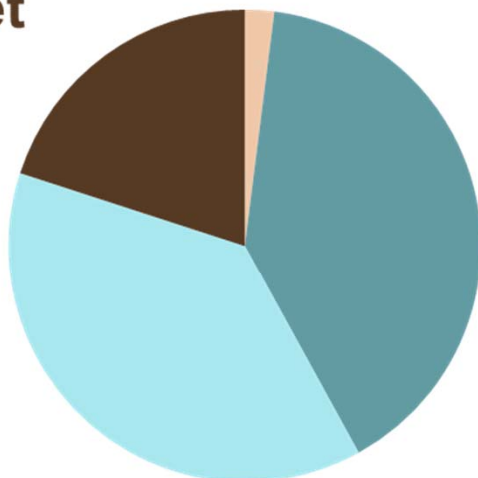
Total Program Budget	\$9,963,871
Recreational Facilities	\$773,107
Roads, Streets, and Bridges	\$2,233,551
Public Safety Facilities and Equipment	\$927,728
Administrative Facilities	\$4,273,841
Total Program Expenditures (Through June 30, 2016)	\$8,208,227

Nikki Perry



# Lilburn

## 2014 SPLOST Program Budget



- Recreational Facilities
- Roads, Streets, and Bridges
- Public Safety Facilities and Equipment

<b>Total Program Budget</b>	<b>\$5,724,864</b>
Recreational Facilities	\$80,299
Roads, Streets, and Bridges	\$1,861,904
Public Safety Facilities and Equipment	\$1,649,441
Administrative Facilities	\$719,031
<b>Total Program Expenditures (Through June 30, 2016)</b>	<b>\$4,310,675</b>

Nikki Perry





Bryson Park

Lawrenceville Highway





Bryson Park

Lawrenceville Highway

Young Street

Norman Drive

Young Street

Young Street

Young Street

Young Street

Young Street

Young Street

Young Street

Lula Street

Railroad Avenue

Lilburn City Park

Camp Creek Road

Camp Creek  
Greenway Trail



Bryson Park

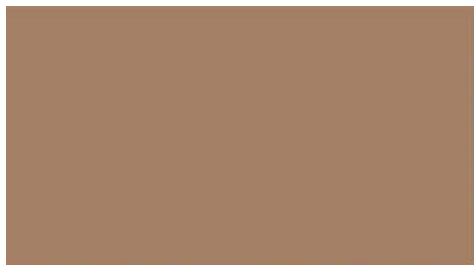


# Lilburn Redevelopment Goals

- Increase property values
- Create destinations
- Build relationships
- Strengthen community identity







**SPLOST**



your **pennies**  
at **work**



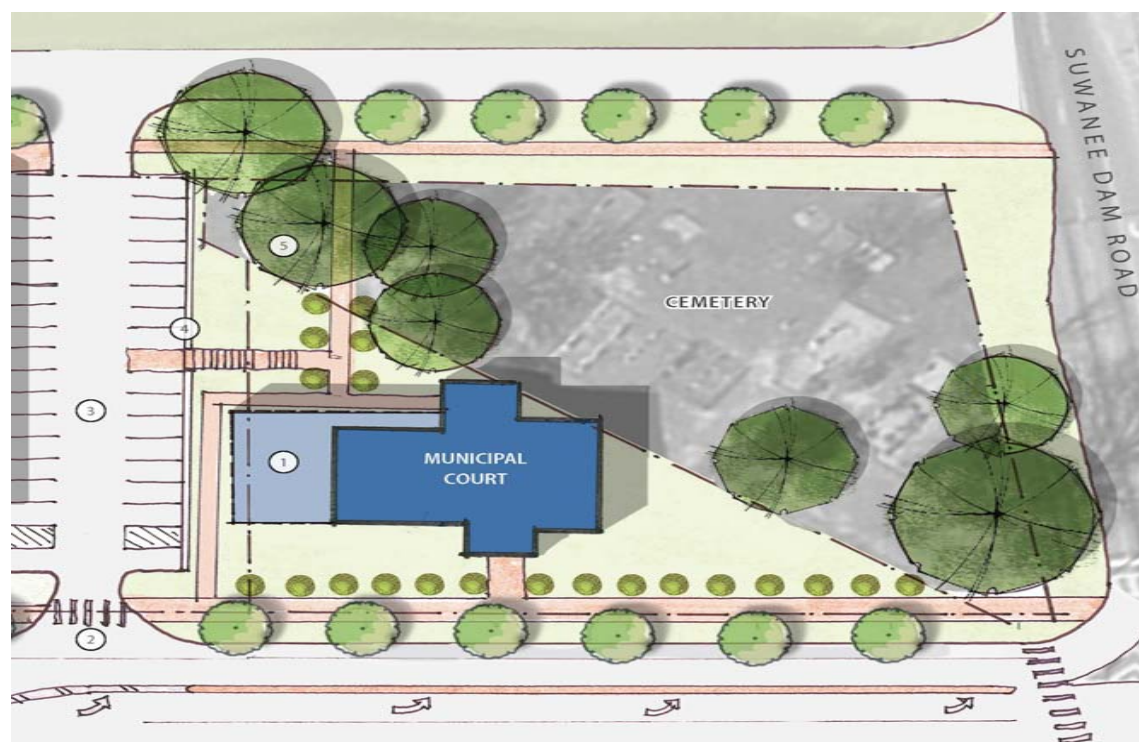
# City of Suwanee



SPLOST Project Update  
December 9, 2016



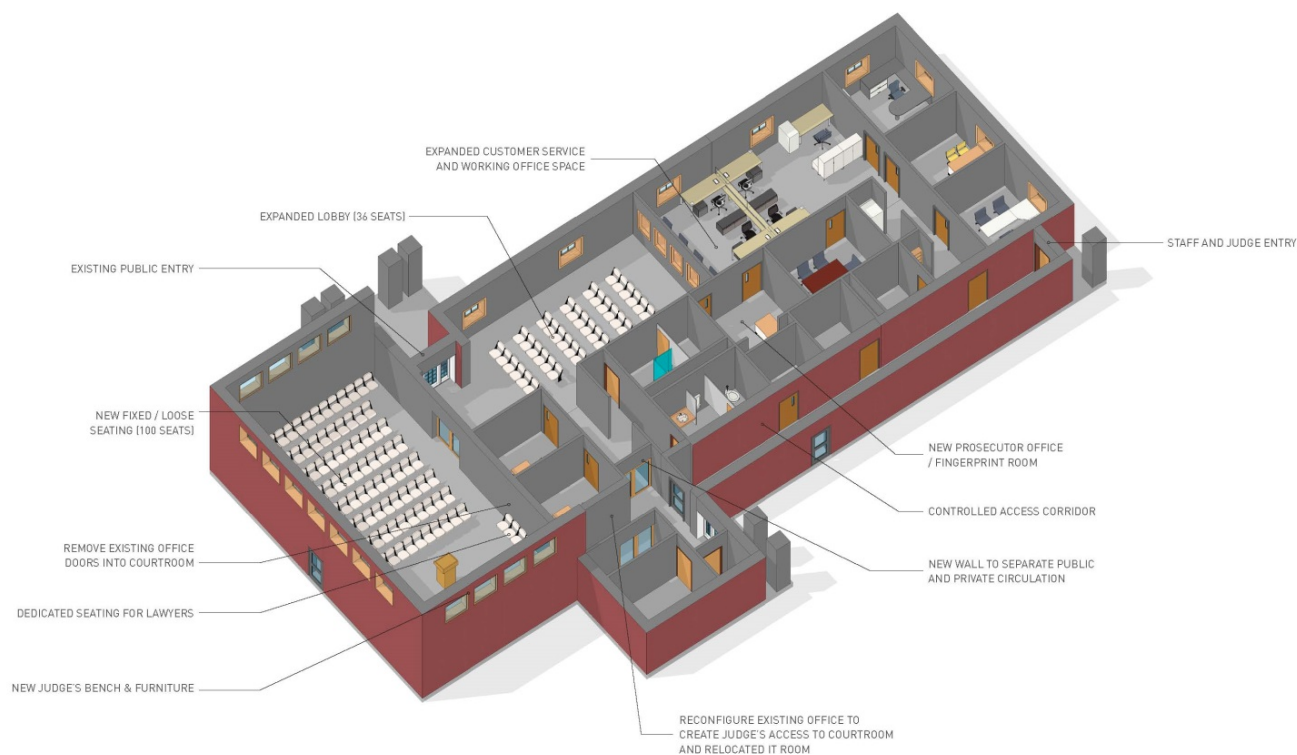
# Suwannee



**Courthouse Expansion Site Plan**



# Suwanee



## Courthouse Expansion Concept





# Suwannee



Library Plaza and Bridge Perspective

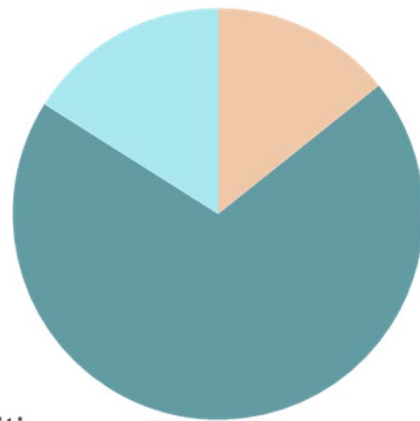
Master Plan

Town Center West Project



# Suwanee

## 2005 SPLOST Program Budget



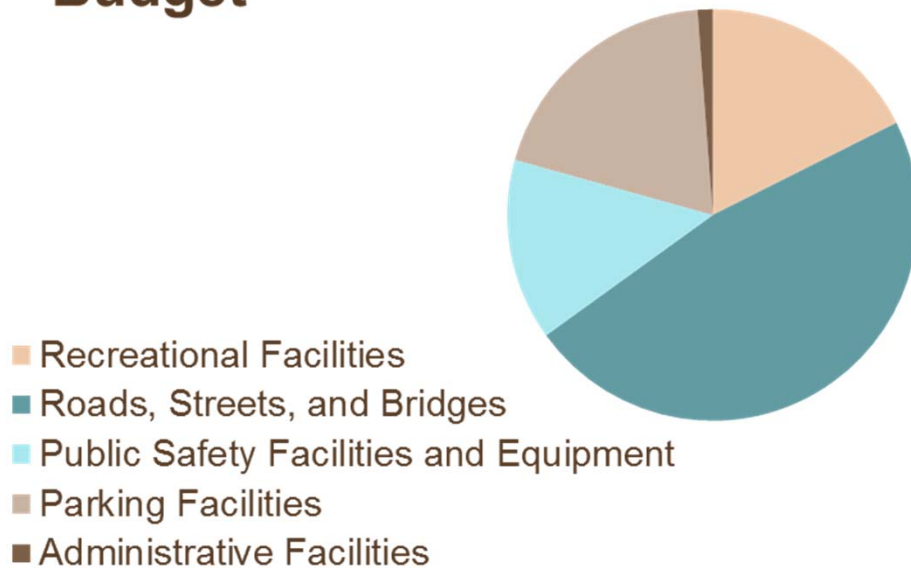
- Recreational Facilities
- Roads, Streets, and Bridges
- Public Safety Facilities and Equipment

Total Program Budget	\$7,220,849
Recreational Facilities	\$1,031,364
Roads, Streets, and Bridges	\$5,031,418
Public Safety Facilities and Equipment	\$1,158,067
Total Program Expenditures-to-date	\$7,220,849



# Suwanee

## 2009 SPLOST Program Budget

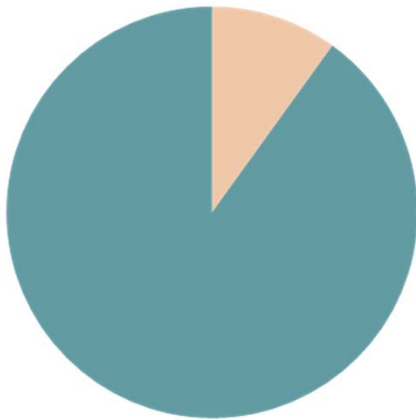


Total Program Budget	\$10,380,200
Recreational Facilities	\$1,274,662
Roads, Streets, and Bridges	\$3,234,353
Public Safety Facilities and Equipment	\$1,532,302
Parking Facilities	\$63,237
Administrative Facilities	\$80,802
Total Program Expenditures-to-date	\$6,185,356

**SPLOST**

# Suwanee

## 2014 SPLOST Program Budget

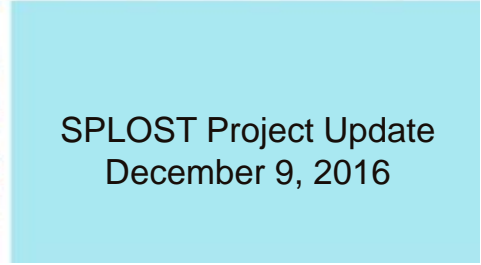


- Recreational Facilities
- Roads, Streets, and Bridges

Total Program Budget	\$6,881,085
Recreational Facilities	\$0
Roads, Streets, and Bridges	\$817,905
Total Program Expenditures-to-date	\$817,905

SPLOST

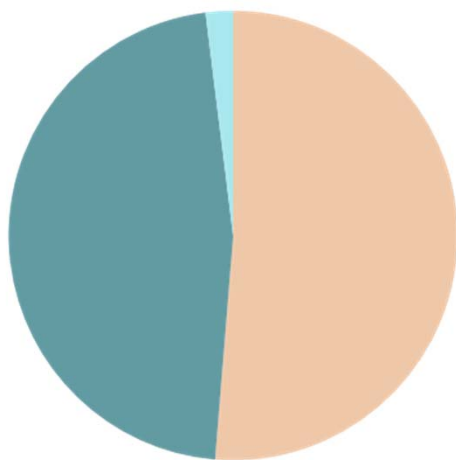






# Sugar Hill

## 2005 SPLOST Program Budget



- Recreational Facilities
- Roads, Streets, and Bridges
- Public Safety Facilities and Equipment

2005 Total Program Budget	\$8,955,087
Recreational Facilities	\$4,593,134
Roads, Streets, and Bridges	\$4,184,869
Public Safety Facilities and Equipment	\$ 177,084
Total Program Expenditures-to-date	\$8,955,087

Troy Besseche

# Sugar Hill Splash Park



Troy Besseche



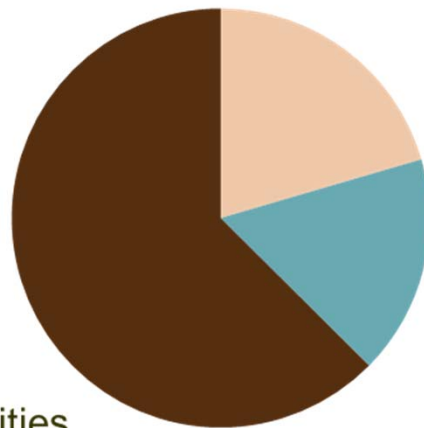
# Sugar Hill Splash Park



Troy Besseche

# Sugar Hill

## 2009 SPLOST Program Budget



- Recreational Facilities
- Roads, Streets, and Bridges
- Administrative Facilities

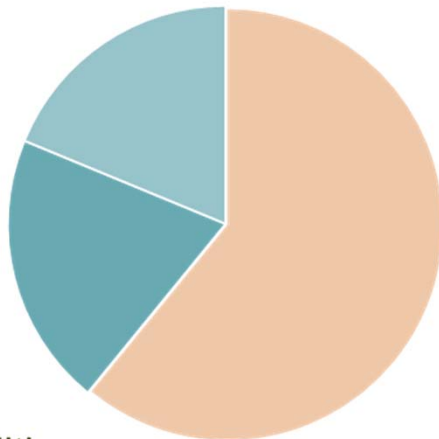
Total Program Budget	\$9,957,759
Recreational Facilities	\$2,039,576
Roads, Streets, and Bridges	\$1,688,159
Administrative Facilities	\$6,230,024
Total Program Expenditures-to-date	\$9,957,759

Troy Besseche

SPLOST

# Sugar Hill

## 2014 SPLOST Program Budget



- Recreational Facilities
- Roads, Streets, and Bridges
- Joint Transportation Projects

Total Program Budget	\$11,982,332
Recreational Facilities	\$0
Roads, Streets, and Bridges	\$1,160,850
Joint Transportation Projects	\$737,945
Total Program Expenditures-to-date	\$1,898,795

Troy Besseche

SPLOST





# Sugar Hill – Brogdon Road

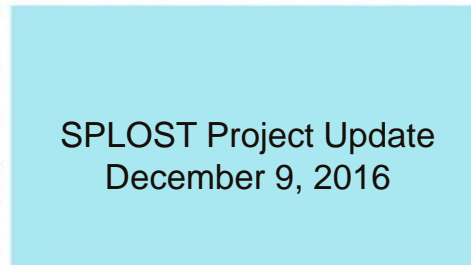
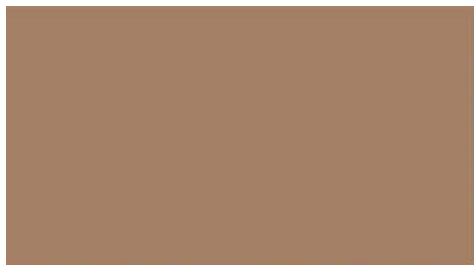


# Sugar Hill EpiCenter



Troy Besseche









**SR 120 LANDSCAPE CONCEPT**  
 06/17/2016

**LEGEND**

- PROPOSED STREET TREE:
  - AMERICAN ELM
  - RED BUD
  - WHITE BARK PINE
  - HYDRANGEA
- PROPOSED FLOWERING TREE:
  - DOGWOOD
  - REDBUD
  - HYDRANGEA
  - SPRING BURNING
- PROPOSED LANDSCAPE TREE:
  - AMERICAN ELM
  - RED BUD
  - WHITE BARK PINE
  - HYDRANGEA
  - DOGWOOD
  - REDBUD
  - HYDRANGEA
  - SPRING BURNING
- EXISTING TREE

James Riker

# SR 120 Road Re-alignment



James Riker

## Before

# SR 120 Road Re-alignment



James Riker

After





# SR 120 Road Re-alignment



James Riker



# SR 120 Road Re-alignment



James Riker

Before

# SR 120 Road Re-alignment



James Riker

After



# SR 120 Road Re-alignment

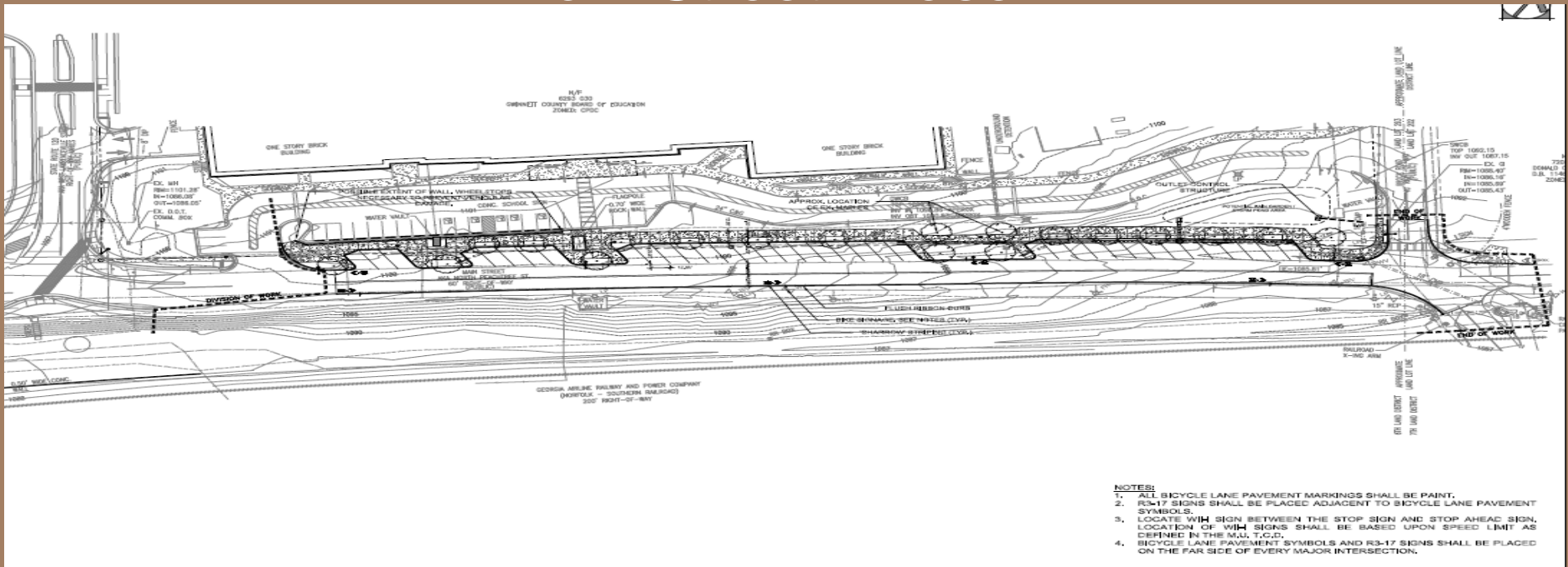


James Riker



# Duluth

## Main Street Phase II



James Riker



# Main Street Parking Phase II



James Riker

## Before



# Main Street Parking Phase II



James Riker

After

# Main Street Parking Phase II



James Riker





# Duluth

## Scott Hudgens Park Parking Improvements



James Riker



# Scott Hudgens Park



James Riker

## Before

# Scott Hudgens Park



James Riker

**After**



# Scott Hudgens Park



James Riker

## Before



# Scott Hudgens Park



James Riker

**After**



# Duluth

## Roadway Resurfacing



Before



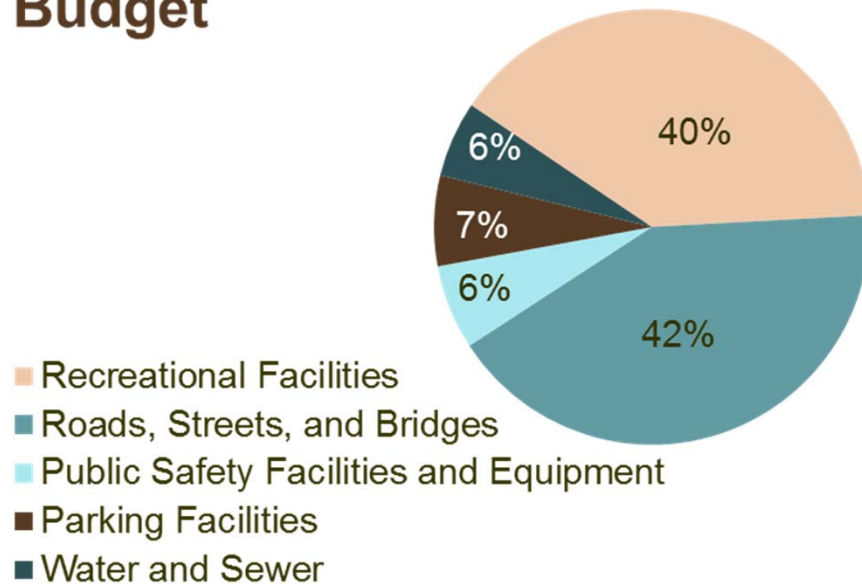
After

Duluth Park Lane

James Riker

# Duluth

## 2009 SPLOST Program Budget



Total Program Budget	\$17,770,005
Recreational Facilities	\$7,055,000
Roads, Streets, and Bridges	\$7,404,453
Public Safety Facilities and Equipment	\$1,117,547
Parking Facilities	\$1,195,363
Water and Sewer Capital Improvements	\$997,642
Total Program Expenditures-to-date (89.7%)	\$15,968,345

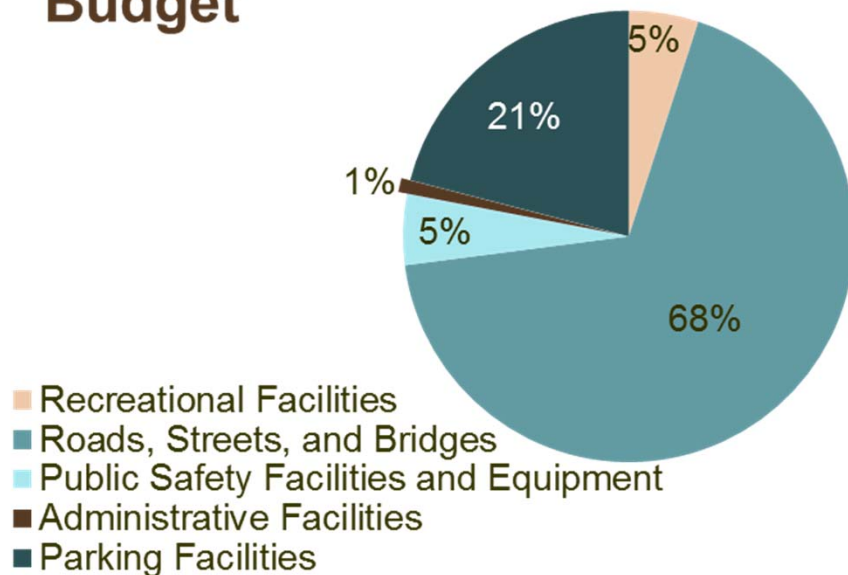
James Riker

SPLOST



# Duluth

## 2014 SPLOST Program Budget



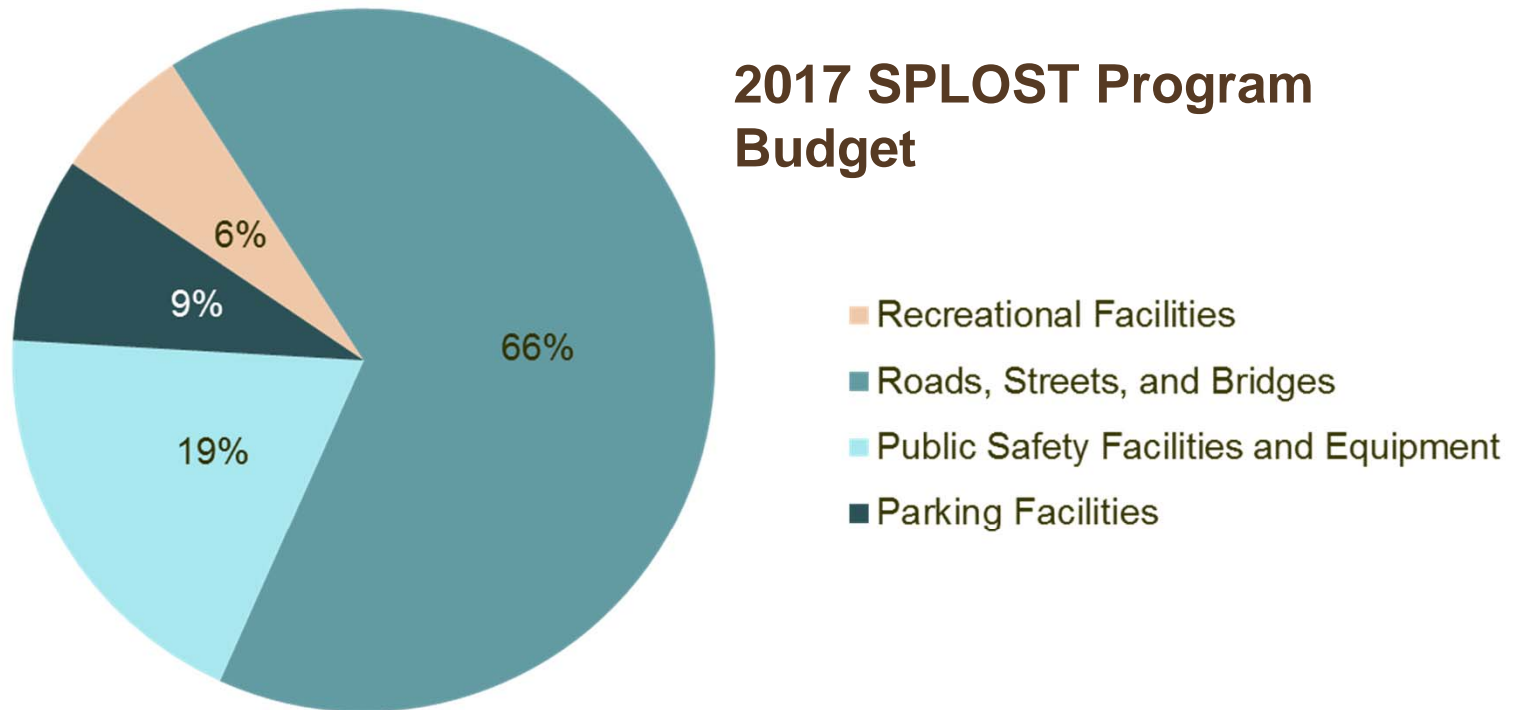
Total Program Budget	\$11,873,233
Recreational Facilities	\$593,250
Roads, Streets, and Bridges	\$8,068,211
Public Safety Facilities and Equipment	\$601,467
Administrative Facilities	\$118,651
Parking Facilities	\$2,491,655
Total Program Expenditures-to-date (66%)	\$7,812,762

James Riker

SPLOST

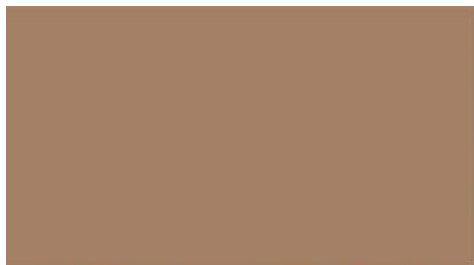
# Duluth

## 2017 SPLOST Program Budget



James Riker

**SPLOST**







# Oak Road Sidewalk



Butch Sanders



# Oak Road Sidewalk (East)

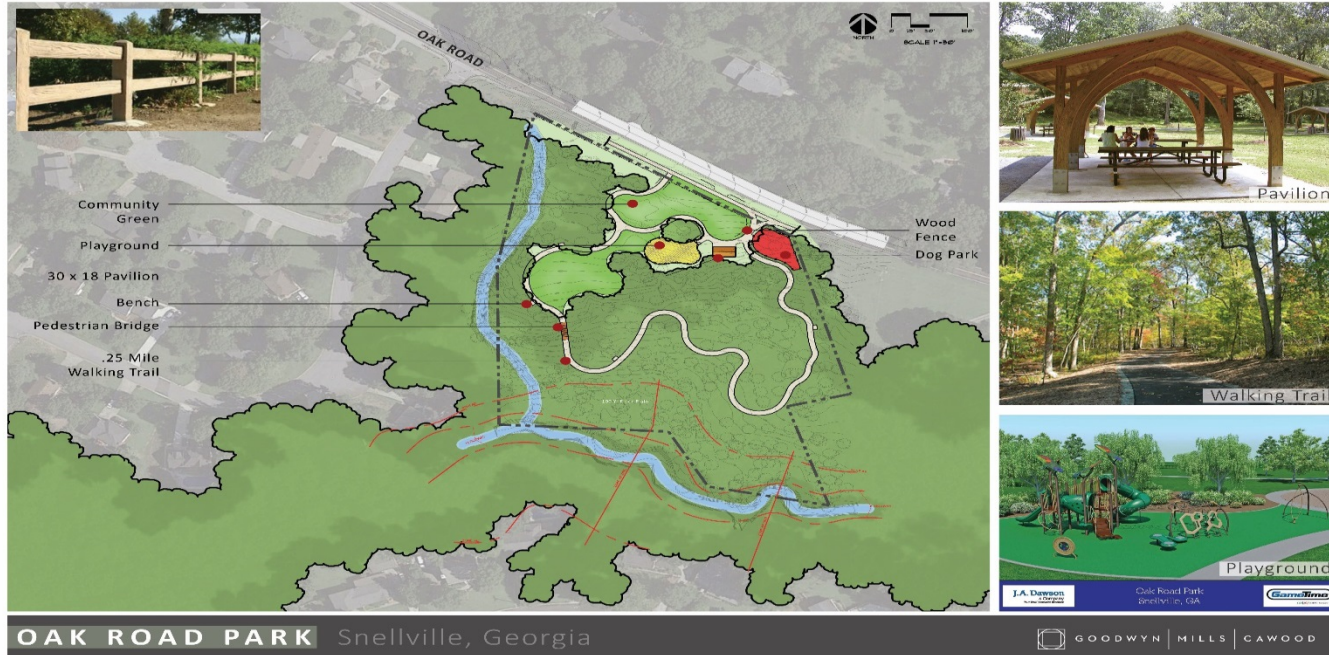


Butch Sanders





# Oak Road Park



Butch Sanders





# LCI Streetscape (Before)



Butch Sanders



# LCI Streetscape (After)



Butch Sanders



# Towne Green Redesign



Butch Sanders





CITY OF  
**Peachtree**  
**CORNERS**  
Innovative & Remarkable

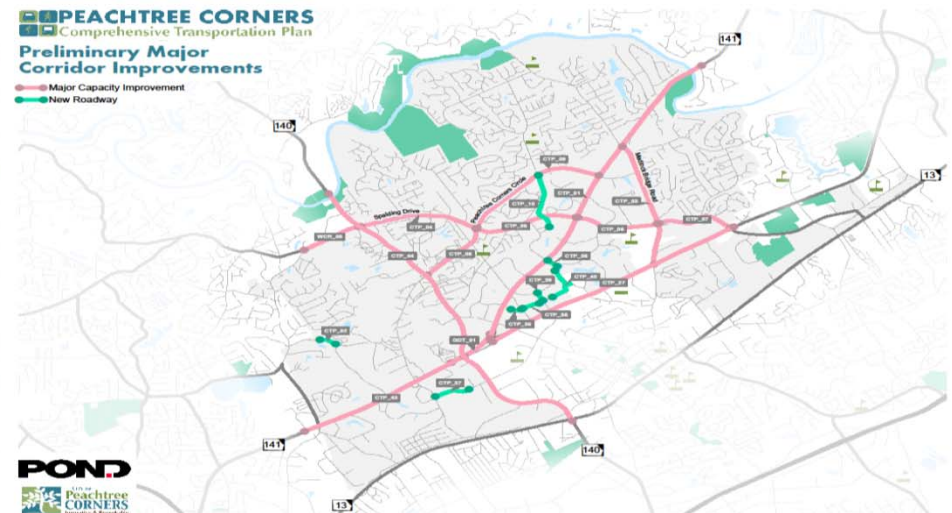
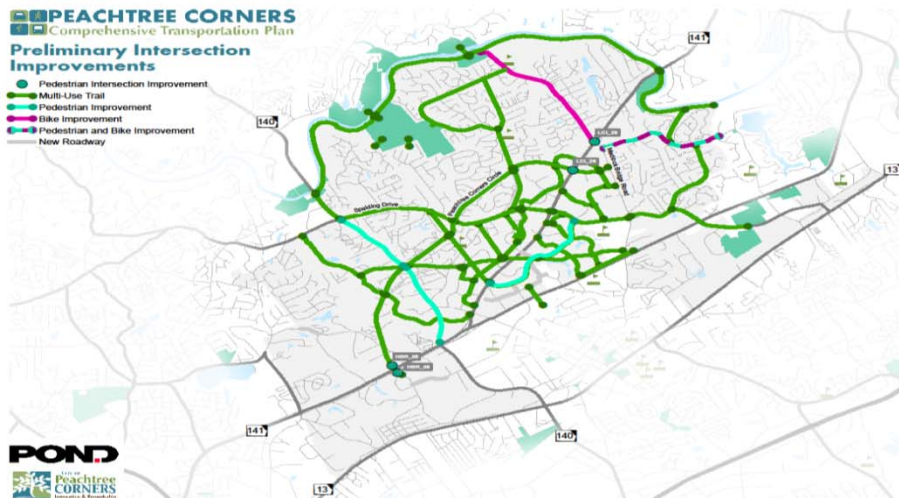
# **SPLOST Program Update**

**Greg Ramsey, P.E.**  
**Public Works Director**  
**December 9, 2016**

# PEACHTREE CORNERS

## Comprehensive Transportation Plan

- 2015 update included a plan for a CTP
- CTP is scheduled for completion January 2017
- \$180,000 SPLOST investment

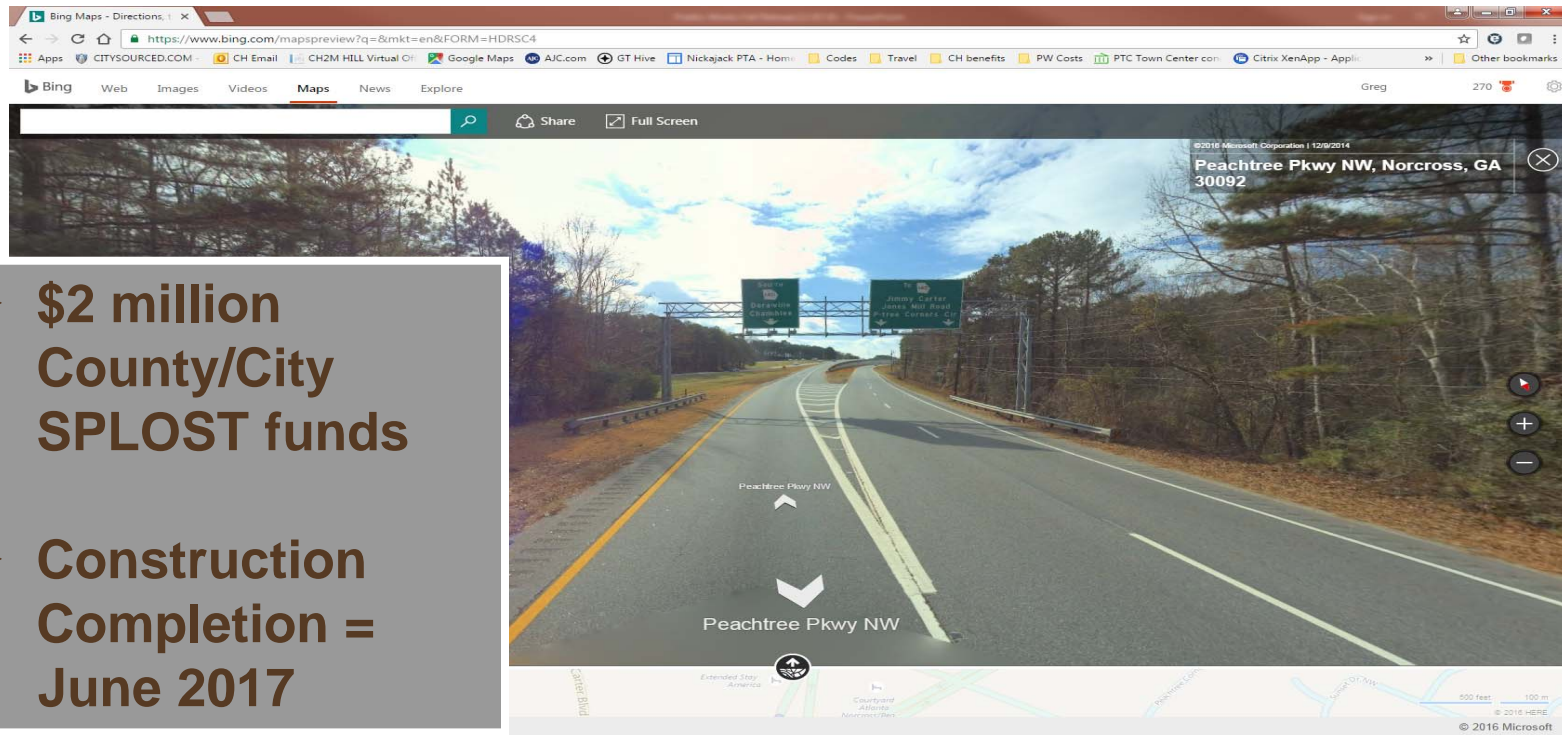


Greg Ramsey

SPLOST

# SR 141 Southbound at PIB Split

- **\$2 million  
County/City  
SPLOST funds**
- **Construction  
Completion =  
June 2017**



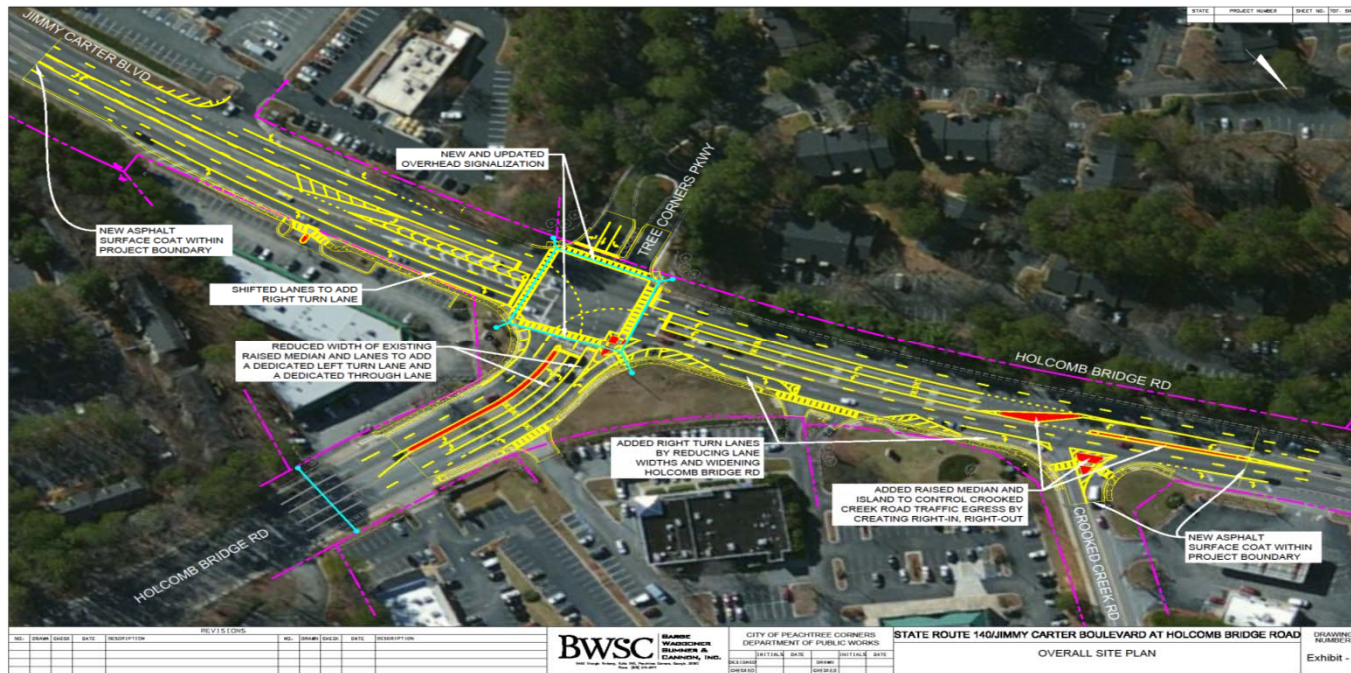
Greg Ramsey

**SPLOST**



# Holcomb Bridge Rd. @ Jimmy Carter Blvd.

Joint SPLOST project, \$1.1 Million, Construction starting January 2017



Greg Ramsey

SPLOST

# Spalding Drive Widening

Joint SPLOST project, concept designs under development



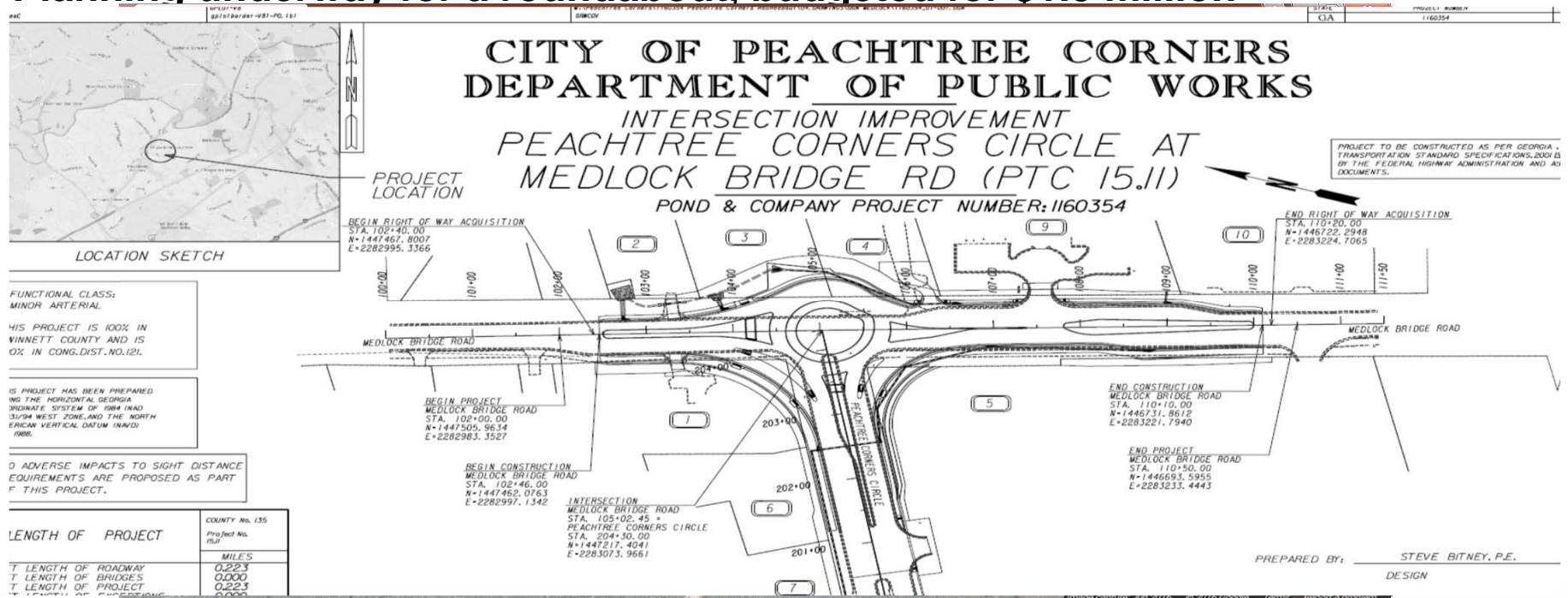
Greg Ramsey

SPLOST



# Peachtree Corners Circle at Medlock Bridge Road

Planning underway for a roundabout, budgeted for \$1.5 million



Greg Ramsey

**SPLOST**



## FY 16: Resurfacing

- Currently allocating \$1.5 Million annually for pavement resurfacing using SPLOST funds
- 2015 & 2016: 12.5 miles of streets resurfaced
- Current cycle of resurfacing is 15 years for city maintained streets

# Pedestrian Safety Projects



## Three current projects:

1. Winters Chapel Road at Winterbrook Court
2. Peachtree Corners Circle at Eastman Trail
3. East Jones Bridge Road at Rebel Ridge Court
4. Total costs \$200,000 (design & construction)

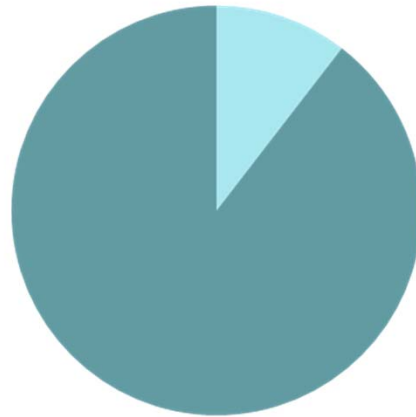
# Sidewalk Projects

- Local SPLOST commitment = \$427,000 annually
- Total 5 year projection = \$3,000,000
- Completed Sidewalk Projects:
  - Technology Parkway (south end)
  - Winters Chapel Road
- Upcoming Sidewalk Projects:
  - Technology Parkway (north end)
  - Jay Bird Alley



# Peachtree Corners

## 2014 SPLOST Program Budget



- Joint Transportation Projects
- Roads, Streets, and Bridges

Total Program Budget	\$18,339,478
Roads, Streets, and Bridges	\$4,573,398
Joint Transportation Projects	\$16,000
Total Program Expenditures-to-date	\$4,589,398

Greg Ramsey

SPLOST

# CIP Projection Summary

Recurring/Routine Capital Expenditures	FY17	FY18	FY19	FY20	FY 21	
Resurfacing	\$1,500,000	\$1,500,000	\$1,500,000	\$1,500,000	\$1,500,000	\$7,500,000
LMIG Grant Match	\$75,000	\$80,000	\$85,000	\$90,000	\$95,000	\$425,000
Intersection Enhancements	\$1,500,000	\$4,000,000	\$2,000,000	\$2,000,000	\$2,000,000	\$11,500,000
Sidewalk Improvements and Additions	\$600,000	\$600,000	\$600,000	\$600,000	\$600,000	\$3,000,000
<b>Total</b>	<b>\$3,675,000</b>	<b>\$6,180,000</b>	<b>\$4,185,000</b>	<b>\$4,190,000</b>	<b>\$4,195,000</b>	<b>\$22,425,000</b>
Nonrecurring/Nonroutine Capital Expenditures						
SR 141 Corridor Study	-	\$380,000	-	-	-	\$380,000
Town Center Development	\$2,000,000	\$9,000,000				\$11,000,000
Holcomb Bridge/Jimmy Carter Intersection	-	\$600,000	-	-	-	\$600,000
Spalding Drive Widening	-	-	\$350,000	\$350,000	-	\$700,000
Joint Project: Jimmy Carter/Buford Hwy Intersection	-	-	\$1,000,000	-	-	\$1,000,000
<b>Total</b>	<b>\$2,000,000</b>	<b>\$9,980,000</b>	<b>\$1,350,000</b>	<b>\$350,000</b>	<b>\$0</b>	<b>\$13,680,000</b>
<b>Grand Total Capital Expenditures</b>	<b>\$5,675,000</b>	<b>\$16,160,000</b>	<b>\$5,535,000</b>	<b>\$4,540,000</b>	<b>\$4,195,000</b>	<b>\$36,105,000</b>

Greg Ramsey

SPLOST



# CITY OF LAWRENCEVILLE

**2009 SPLOST Projects**  
**2014 SPLOST Projects**

Chuck Warbington,  
City Manager

**SPLOST**



# **2009 and 2014 SPLOST Projects List – Highlights**

- 1. Heritage Trail 1 (2009)**
- 2. Heritage Trail 2 (2009)**
- 3. LCI Two-Way Conversion (2009)**
- 4. Police Department Building (2009)**
- 5. The College Corridor (2009,2014)**
- 6. Lawrenceville Lawn (2009,2014)**



# 2009 and 2014 SPLOST Project Funding Sources

## 1. Heritage Trail 1

- Public/Private Funds including County, City, Private business, GDOT\* with TE\* Grant, City, and SPLOST

## 2. Heritage Trail 2

- TE Grant, SPLOST, City

## 3. LCI Two-Way Conversion

- ARC\* LCI\* Grant, City and SPLOST

## 4. Police Dept. Building

- City and SPLOST

## 5. The College Corridor

- City and SPLOST

## 6. Lawrenceville Lawn

- City and SPLOST

### Acronym Key:

\*GDOT (Georgia Dept. of Transportation)

\*TE (Transportation Enhancement)

\*ARC (Atlanta Regional Commission)

\*LCI (Livable Communities Initiative)



# 2009 SPLOST Heritage Trail 1

- Starts at GJAC War Memorial and runs to Rhodes Jordan Park
- Features red brick inlay with decorative lamp posts
- **STATUS: Complete**



Chuck Warbington,  
City Manager

**SPLOST**



# 2009 SPLOST Heritage Trail 1

- Starts at GJAC War Memorial and runs to Rhodes Jordan Park
- Features medallions commemorating significant contributors to City history



Chuck Warbington,  
City Manager

SPLOST

# 2009 SPLOST Heritage Trail 2

- Starts at intersection of Rhodes Jordan Park and runs along Paper Mill to Springlake
- **STATUS: Complete**



Chuck Warbington,  
City Manager

SPLOST

# 2009 SPLOST LCI Two-Way Conversion

- Convert Perry & Clayton Streets to two-way thru the City's Downtown Area
- **STATUS:** Bid to be awarded January 2017

**Total Project**

**Budget:**

**\$6,425,459**

\$2,000,000 (SPLOST)

\$3,512,126 (LCI)

\$913,333 (City)



Chuck Warbington,  
City Manager

**SPLOST**



# 2009 SPLOST LCI Two-Way Conversion (Continued)

- **3 Widening Projects at Jackson/Scenic, Jackson/Crogan/Pike/Buford and Nash/Clayton/Perry with storm water and curbing enhancements**



Chuck Warbington,  
City Manager

SPLOST

# 2009 SPLOST Police Department Building

- Police Department Facility at corner of Jackson Street & Scenic Hwy
- **STATUS: Complete**

Total Project Budget:

**\$8,000,000**

**\$6,177,437 (SPLOST)**

**\$1,822,563 (City)**



Chuck Warbington,  
City Manager

**SPLOST**

# 2014 SPLOST The College Corridor

- **2.2 mile new road with Roundabouts and a Linear Park with Multi-Purpose Trails**
- **Connects the Historic Downtown to Georgia Gwinnett College**
- **STATUS: 95% ROW Acquired**

Total Project Budget:  
\$31,500,000

  - **Ph 1 - Depot Area Construction Spring 2017**

**Total Project Budget:**  
**\$31,500,000**  
 \$13,458,662 (SPLOST)  
 \$18,041,338 (City)



Chuck Warbington,  
City Manager

**SPLOST**



# 2014 SPLOST The College Corridor (continued)



WETLAND + NATIVE SEED MIX  
FIRST YEAR



WETLAND + NATIVE SEED MIX  
SECOND YEAR



WETLAND + NATIVE SEED MIX  
THIRD YEAR



SOD + NATIVE GRASS TYPICAL APPEARANCE



STREET TREES



**JACOBS**

COLLEGE CORRIDOR LANDSCAPE  
TYPICAL TREATMENT

Chuck Warbington,  
City Manager

**SPLOST**

# 2009 and 2014 SPLOST Lawrenceville Lawn

- 7.5-acre Event Facility with parking, children's playground, sand volleyball, fountain, bridge, and passive recreation
- **STATUS: Complete**  
Total Project Budget:  
\$8,000,000  
\$5,895,407 (SPLOST)



Chuck Warbington,  
City Manager

SPLOST



# 2016 Lawrenceville Lawn



Chuck Warbington,  
City Manager

SPLOST



# 2020 Lawrenceville Lawn – Catalyst



Chuck Warbington,  
City Manager

SPLOST





# Buford



Before



After

## Main Street: Streetscape

Randy Meacham





# Buford



**Before**



**After**

## **Main Street: Streetscape**

Randy Meacham

# Buford



## Shadburn Ferry Road at East Main Street

Randy Meacham

SPLOST





# Buford



## Lee Street from East Main to Buford Highway – After

Randy Meacham





# Buford

## South Lee Street from East Main to Buford Highway



Randy Meacham



# Buford



Before



After

## Street Pedestrian Facilities Improvement Project

Randy Meacham





# Buford



Before



After

## South Hill Street Pedestrian Facilities Improvement Project

Randy Meacham





# Buford



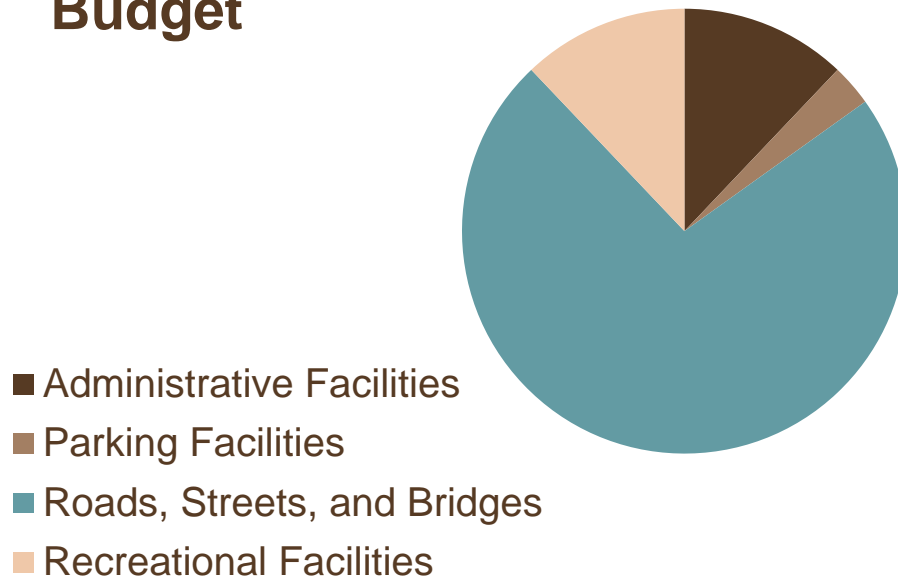
## Buford Youth Sports Complex

Randy Meacham



# Buford

## 2005 SPLOST Program Budget



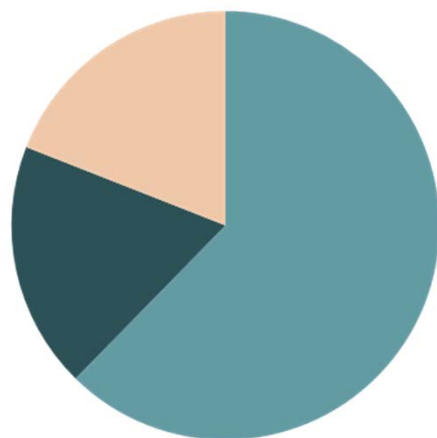
Total Program Budget	\$8,276,892
Administrative Facilities (Buford City Hall)	\$1,000,000
Parking Facilities	\$250,000
Roads, Streets, and Bridges	\$6,026,892
Recreational Facilities	\$1,000,000
Total Program Expenditures-to-date	\$8,276,892

Randy Meacham



# Buford

## 2009 SPLOST Program Budget



- Roads, Streets, and Bridges
- Water and Sewer Expansion
- Recreational Facilities

Total Program Budget	\$8,700,383
Water & Sewer Capital Improvements	\$0
Roads, Streets, and Bridges	\$1,687,261
Recreational Facilities	\$1,200,000
Total Program Expenditures-to-date	\$2,887,261

Randy Meacham





# Rest Haven

Rest Haven allocated 100% of its funds for both the 2005 and 2009 SPLOST programs to Roads, Streets, and Bridges.

## **Current Project**

- Buford Highway Widening



# Auburn

Auburn has spent 100% of its 2005 SPLOST program allocation.

A portion of the 2009 SPLOST program funds has been spent toward:

- Road repairs
- Road repair equipment
- Stormwater drainage and guardrail improvements



# Auburn



Blackberry Lane

**Before Rejuvenation Paving**

Randy Meacham





# Auburn



Blackberry Lane



Blackberry Circle



Blackberry Court

**After Rejuvenation Paving**

Randy Meacham



# Auburn



Before



After

## Saddlecreek Court – Rejuvenation Paving

Randy Meacham





# Auburn



## Rejuvenation Paving

Randy Meacham





# Braselton

Braselton allocated 100% of its 2005 SPLOST program funds for Roads, Streets, and Bridges.

## Completed Projects

- Thompson Mill Road Multi-Use Path
- Repaving the Grand Hickory roundabout
- Repaving of roads in Mulberry Park Subdivision, Reflections subdivision and The Falls subdivision





# Braselton

Braselton allocated its 2009 SPLOST program funds as follows:

- 60% for Roads, Streets, and Bridges
- 40% for Water and Sewer Capital Improvement

## **Current Project**

- Lighting of and extension of the Braselton LifePath (in conjunction with funds from Braselton CID)

Randy Meacham





# Grayson

## Gateway to the City



Randy Meacham





# Grayson – Road Improvements

## Highway 20 Median Improvement



Randy Meacham



# Grayson - Road Improvements

**Joint City/County Project -  
Intersection of Grayson  
Parkway and Rosebud Road**

Randy Meacham





# Grayson – Transportation Project



## City Hall Parking Lot Expansion

Randy Meacham





# Grayson – Road Improvements

## Middleton Subdivision Resurfaced

Randy Meacham





# Grayson – Road Improvements

## Windsor Place Subdivision Resurfaced

Randy Meacham







# Grayson – Road Improvements

## Herring Ridge Subdivision Resurfaced



Randy Meacham





# Grayson – Road Improvements



## Rosewood Subdivision Resurfaced

Randy Meacham





# Grayson – Recreation Project

## City Park Playground Improvements



Randy Meacham



# Loganville



## Athens Highway (Highway 78) and Brand Road

Randy Meacham





# Dacula – Road Improvements

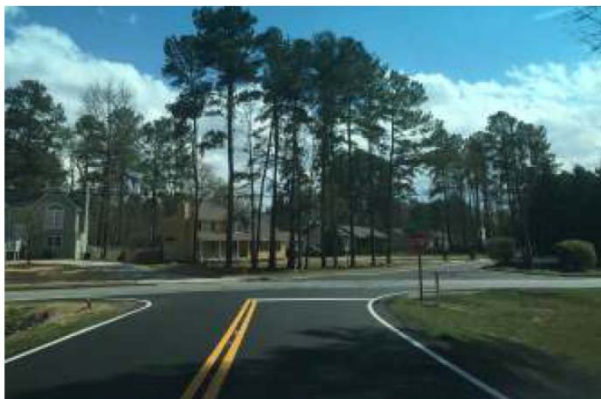


**Hebron Church Road,  
Hinton Road (West), and  
Norman Woods Court  
Paving Improvements – Before**

Randy Meacham

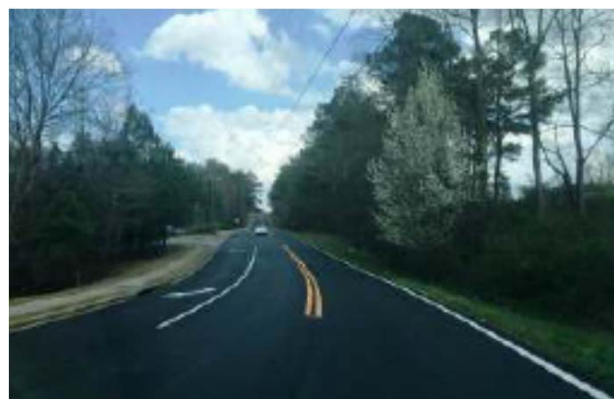


# Dacula – Road Improvements



**After**

Randy Meacham



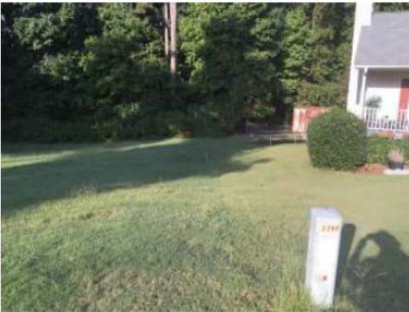
# Dacula – Water and Sewer



**PHOTO #1**



**PHOTO #2**



**PHOTO #3**



**PHOTO #4**

**Brookton Station  
Subdivision –  
Sinkhole  
Observation  
and Repair**



# Dacula – Water and Sewer



**PHOTO #1**



**PHOTO #2**



**PHOTO #3**



**PHOTO #4**

**Brookton Downs  
Subdivision –  
Sinkhole  
Observation  
and Repair**



# Dacula – Public Safety Striping



**PHOTO #1**



**PHOTO #2**



**PHOTO #3**



**PHOTO #4**

Randy Meacham



# Dacula – Maple Creek Park



**PHOTO #1**



**PHOTO #2**



**PHOTO #3**



**PHOTO #4**

## Park Shades Installations

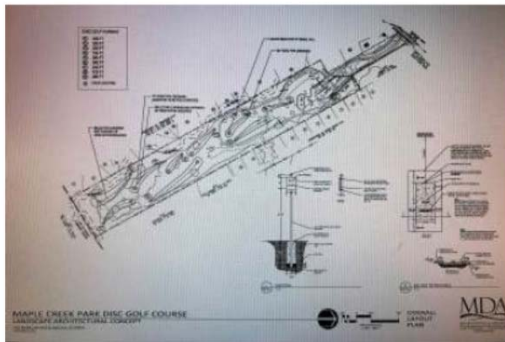
Randy Meacham





# Dacula – Maple Creek Park

## Frisbee Golf



**PHOTO #1**



**PHOTO #2**



**PHOTO #3**



**PHOTO #4**



**PHOTO #5**



**PHOTO #6**



**PHOTO #7**



**PHOTO #8**



**PHOTO #9**



**PHOTO #10**

Randy Meacham



# Norcross

## Landscaping at Cotton Gin

**Before**

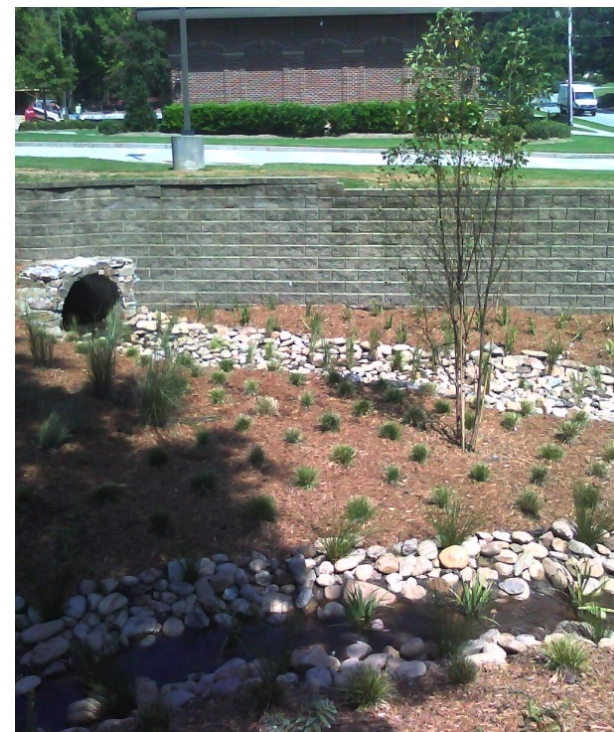
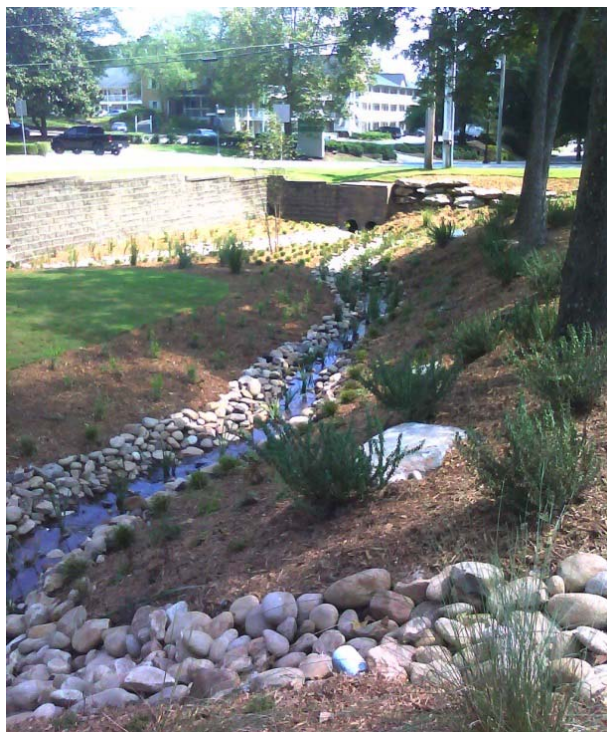


Randy Meacham





# Norcross



Randy Meacham

## Landscaping at Cotton Gin – After





# Norcross



## Discovery Garden Park - Before

Randy Meacham



# Norcross



## Discovery Garden Park - After

Randy Meacham





# Norcross



## Summerour Park – Soccer Field and Concession Stand

Randy Meacham





# Norcross



## **Norcross Historic Cemetery Streetscaping Resurfacing Project**

Randy Meacham



# Norcross



## Kelly Street Streetscaping Resurfacing Project

Randy Meacham



# Berkeley Lake



## 2016 Activities

- 2.4 miles of roadway rehabilitation and resurfacing
- 18 roadway drainage improvements

### **Ridge Road Resurfacing Project**

Randy Meacham





## **Presentation of Results of Independent Procedures on the Gwinnett County 2005, 2009, and 2014 SPLOST Programs**

Year ended December 31, 2015





# What has SPLOST Funded Summary



**Roads**



**Recreational  
Facilities and  
Greenspace**



**Public Safety  
Facilities and  
Equipment**



**Libraries**



**City  
Projects**